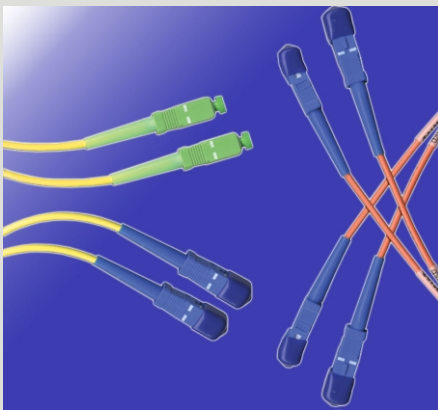
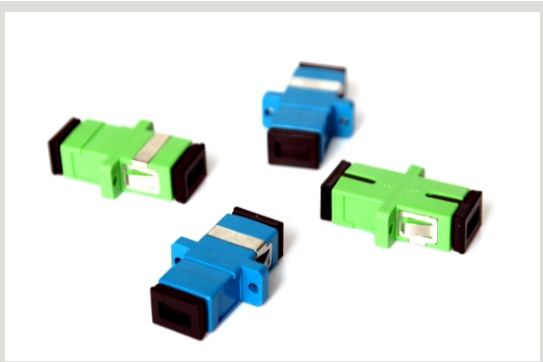


## SC Adapter and Connector

### Features / Benefits



### APPLICATIONS

- Telecommunications Network
- Data Communication Network
- Optical CATV
- Test Equipment

### FEATURES

- UPC, APC polishing
- High Return Loss
- Low Insertion Loss
- High Reliability and Stability

### Operating Specifications

Test Item	Test Condition	Specification	
		UPC	APC
<b>Optical Performance</b>			
Insertion Loss	1310 nm LED light source	<0.3 dB	<0.3 dB
Return Loss	1310 nm LD light source	>50 dB	>60 dB
Thermal Age	+85°C, 168 hours	0.2 dB	0.2 dB
Thermal Cycle	-40 - +75°C, 21 Cycles 168 Hours	0.2 dB	0.2 dB
<b>Environ. Performance</b> (Max. Insertion Loss Change)			
Humidity Aging	+75°C, 95% RH, 168 hours	0.2 dB	0.2 dB
Humidity Cond. Cycling	-10 to +65°C, 90% - 100% RH, 14 cycles, 168 hours	0.2 dB	0.2 dB
Vibration	10-55 Hz, 1.5 mm (p-p)	0.2 dB	0.2 dB
Flex	0.9 kgf, -90° to +90° repeat for 100 cycles	0.2 dB	0.2 dB
Operating Temperature		-40 to +85°C	
<b>Mech. Performance</b> (Max. Insertion Loss Change)			
Twist	1.35kgf, ±900°, 10 times	0.2 dB	0.2 dB
Proof	0°, 6.8 kgf, 90°, 3.4 kgf	0.2 dB	0.2 dB
Impact	H=1.5 M, Total 8 Impacts	0.2 dB	0.2 dB
Exchangeability	Randomly	0.2 dB	0.2 dB
Mechanical Durability	500 Times	0.2 dB	0.2 dB
Tensile Strength		200-600 g	

### Ordering Information

